

## Chamber's building plans "absolutely fantastic"

The Seguin Area Chamber of Commerce kicked off its fund-raising campaign in 60s style in late January with a sneak peak into the plans for renovation of its new home on North Camp Street in downtown Seguin.

People crowded into the building to get a glimpse at the plans for the old Seguin Savings Association Building, which was built by Henry Donegan in 1962. Donegan, Stan McKenzie, Charlie Koehler and Mayor Betty Ann Matthies are honorary chairs for the capital campaign.

At the kick-off party, McKenzie said he hoped people will approach this campaign with the right attitude. He says having a positive outlook can mean a great deal to the success of this campaign. Mayor Matthies said she was proud to lend her sup-

port to the project, which will help further revitalize downtown Seguin. And Koehler spoke eloquently during the celebration about the need for the city of Seguin and Guadalupe County to continue to grow. He says the chamber's growth is an important part of the overall growth of this community.

"They have a challenge to make this building functional for them and I am pleading with all of you to make this a great thing - to help the Chamber grow and prosper," he said.

Funds raised during the drive will be used to make renovations to the building which will house the chamber's offices, the Seguin Convention and Visitor's Bureau and a new business center. The money will also be used to retire some of

the debt the chamber incurred when it purchased the building.

The chamber needs the additional space the new building will offer. The lack of space in the existing building is one of the major factors that led to the decision to relocate. One of the other factors was the Seguin Conservation Society's Texas Theatre project. The renovation of that project included adding the existing chamber building to the Texas Theatre complex. Chamber officials say by moving to the Seguin Savings building, the chamber is helping to revitalize two historic properties in downtown Seguin -- the Texas Theatre and its new home at the corner of Camp and Gonzales streets.

The chamber plans to move before summer.

## Business Showcase is your Passport to Seguin

Ready to take a trip around the world? With no airplanes and no packing? And when you're done, you'll already be home!

The annual Business Showcase is just the ticket! Set for Tuesday and Wednesday, March 4 - 5, in the Coliseum, Business Showcase will feature nearly 80 exhibitors, fabulous food and lots of fun!

**BUSINESS**  
*After Hours*

Thursday, Feb. 7  
5 to 7 p.m.

Century 21 United  
D&D Real Estate  
1498 E. Court St.

Membership Drawing is \$1,200!!

The theme for 2008 is **Passport to Seguin - Your Ticket to Success.**

Preview Night - also known as one of the best parties in town - is Tuesday, March 4, from 6 to 9 p.m. There will be food, drinks, entertainment and the opportunity to catch a sneak preview of the booths.

Show Day is Wednesday, March 5, and will feature a light lunch, drawings throughout the day, more food and drinks and some exciting entertainment in the evening!

"We're especially excited this year because we have several new exhibitors," said Business Showcase Chairman Terri Jackson of **A Rose Petal**. "And we have some new activities planned, such as a People's Choice Award."

Booths signed up to date include: A Rose Petal, Acme Brick Company, Advanced Home Health Services, Alamo Work Source Career Center, Alexander Oil Company, All Occasions Catering, Angel Pest Control, Anytime Fitness, Broadway National Bank, Care Inn of Seguin, Celebration Central, CMC Steel Texas, Century 21 United Action, Eden Home, Inc., Edward Jones Investments, Evergreen RV, Guadalupe Regional Home Health, Guadalupe Regional Medical Center, Guadalupe Valley Nursing Center, GVEC, Hacienda Oaks, Hawkins Personnel Group, Hope Hospice, Kraft Mobiletel, KWED, LCS Medical Spa, Lifegate Christian School, Lone Star

Printing, M & S Engineering, LTD., Maldonado Nursery Landscape & Irrigation, Peters General Construction, Renee Whitwell - New York Life, Print Express, Randolph Brooks Federal Credit Union, Randolph Brooks Real Estate Center, Seguin Chevrolet, Seguin Ford, *Seguin Gazette-Enterprise*, Servpro San Marcos / New Braunfels, Texas Lutheran University, Texas Propane Energy, The First National Bank, The Texas 1031 Exchange Company, The UPS Store, Tri-County A/C & Heating, US Health Group, VDB Enterprises, Warm Springs Specialty Hospital, Wells Fargo Bank, Wyatt Arp Dodge and You're So Crafty.

Sponsors are being sought to help underwrite the expenses of the event. **To date, sponsors are:**

**EVENT SPONSORS**

**KWED**

*Seguin Gazette-Enterprise*

**PLATINUM**

**GVEC**

**GOLD**

**American Bank of Texas  
First Commercial Bank**

**Guadalupe Regional Medical Center**

**SILVER**

**Masters Electrical Services  
Up's and Grounds**

For exhibitor or sponsorships info, call 379-6382.

## Help us help your business!

**Thank You** for a very successful Capital Campaign Kick off. The month of February is the key to our overall success. With every chamber member's help, we will reach our goals. Remember we are building the future for Seguin.

I ask everyone to look in their hearts and give to the future. We want you to be proud of our new downtown location. We want to help each of you to grow your business and be proud to live in Seguin.

As we embark on day-to-day business, we should never forget the importance of doing business locally. Shopping locally not only helps businesses to continue to thrive and grow, it also helps keeps our tax base low.

Local sales tax helps pave your streets and gives you low-cost city services. Look around and see the vast improvements in your city from downtown, north, south, east and west. I ask every Chamber Member to



**Steve Johnson,  
Chair**

give all businesses a chance. Take time to look through our new *Chamber Business Directory* and ALWAYS SHOP CHAMBER MEMBERS FIRST.

Let the business know that you are a Chamber member and that you make it a practice to shop Chamber Members.

From purchasing new cars or new furniture to eating out, we should always shop local first. With the high cost of gasoline, it does not pay to drive outside our great city when you have the same available services locally.

If you are not sure who to call for maintenance, repairs, or just local services, call the Chamber and ask. Or use your new Directory - keep it handy! The Chamber is your advertising dollars at work. The Chamber is here to give referrals for all our Members. The Chamber is your key to success. Help us work for you.

~ Steve



## If it's cold and rainy, it must be San Antonio Stock Show time!

The San Antonio Rodeo Livestock Show and Rodeo Ambassadors paid their annual visit to Seguin in January to promote their event. They enjoyed seeing the Seguin Area Chamber of Commerce Ambassadors on a rainy, chilly morning at D&D Farm and Ranch.

## CVB

*Continued from Page 5*

provide the Mexican American people of Seguin, Guadalupe county, and the surrounding communities a responsible as well as creative outlet to participate in and contribute to the social life of the area.

The first three Noche De Galas consisted of local and professional mariachi performing at the event and also local and professional Ballet Folklorico groups performed. Each year the performers performed to a sell out crowd, just as they do today.

The idea of a program "Vocalistas de la Canción Ranchera" (singers' competition) was conceived by Pete Moreno, Jr. One evening while sitting at the table eating with Gilbert & Glenda Moreno began to brainstorm about what they could do to further promote mariachi music. Pete said, "If vocalista competitions can take place in other places, there is no reason why we couldn't have one in Seguin. We'll back you up, we know the music,

and you promote it and sell it here in Seguin."

To date, that is what Teatro De Artes De Juan Seguin has done. We encourage anyone who would like to participate in the Noche De Gala, perform in front of a sell out crowd, and be backed by a live mariachi to register to be part of an awesome experience.



### Mark Your Calendar!

**Toast to Texas – Sunday, March 2  
Sebastopol State Historic Site  
1:30 p.m.**

Toast to Texas, a joint program with the Sebastopol State Historic Site, Daughters of the Republic and Texas and the City of Seguin. An afternoon of patriotic speeches and music is capped by a toast to Texas' Independence.

A community event for 20 years and

once again Sebastopol House State Historic Site is privileged to host the tradition.

The Texas Declaration of Independence was signed at Washington-on-the-Brazos on March 2, 1836, declaring the Republic of Texas a free state, independent of Mexico. In the patriotic and civic spirit of early Seguin, we invite you to join us in honor of the people who forged the Lone Star State. Join us in renewing our pledge to Texas. There is no fee.

**BOARD OFFICERS**  
**CHAIR**  
 Steve Johnson  
**CHAIR-ELECT**  
 Shawn Martinez  
**VICE CHAIRS**  
 Sharon Bettis  
 Dan Henry  
 Drew Williams

**TREASURER**  
 Mark Herbold  
**CO-TREASURER**  
 Gail Roberson  
**PAST CHAIRS**  
 Mark Stautzenberger  
 Darren Dunn

**BOARD OF DIRECTORS**  
 Neice Bell  
 Fabio Benjumea  
 Brenda Bloch  
 John Gesick  
 Mike Holdman

**Basil Kallies**  
**Randee Malmsten**  
**Larry Taylor**  
**Monty Trost**  
**Jennifer Schulze**

**We're Here For You!**  
**CHAMBER STAFF**

**President**  
 Shanta Kuhl . . . president@seguinchamber.com

**Convention & Visitors Bureau Director**  
 Sherry Neffard . . . sherry@seguinchamber.com

**Office Manager**  
 Kendy Gravett . . . kendy@seguinchamber.com

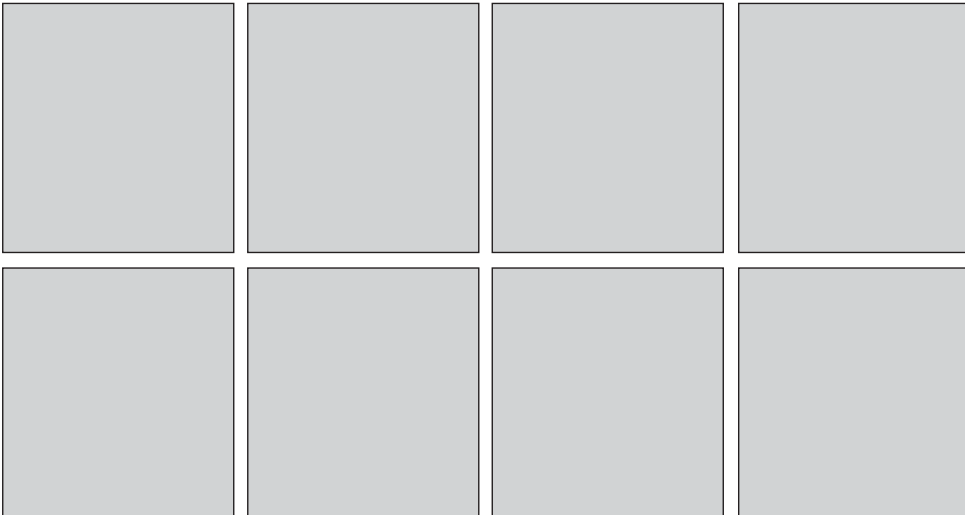
**Events & Communications Director**  
 Dana Overstreet . . . dana@seguinchamber.com

**Receptionist**  
 A'Laura Bell . . . . . alaura@seguinchamber.com

**CVB Services Coordinator**  
 Michelle Morris . . . michelle@seguinchamber.com

**Mission Statement:**  
*To promote commercial, industrial, educational, tourism and agricultural development and to enhance the overall quality of life.*

Seguin Area Chamber of Commerce  
 P.O. Box 710 Seguin, Texas 78156  
 (830) 379-6382 www.seguinchamber.com



## 90 days down - and counting

By **SHANTA KUHL, IOM, CCE**  
**President**  
**Seguin Area Chamber of Commerce**



It seems hard to believe but I've been on the job 90 days! I feel like I'm at home already! Thank you Seguin for welcoming me into your great community! So what has been accomplished in the last 90 days?

- The Board of Directors held a retreat to plan their Program of Work and get organized for 2008, while participating in some Board Training.
- I visited more than 30 local businesses and toured three local manufacturers.
- Visits were made with four of the Chambers of Commerce in our region and I have become more familiar with their staff and programs.
- I also visited the Central Texas Technology Center and with our Seguin Economic Development and Main Street departments.
- Visits have been made with all Chamber board members, four of our city council members including the mayor and city manager, and with our County Judge, County Sheriff and our State Representative.

- The Board purchased a building in downtown Seguin which will be our future home. We began a capital campaign, developed marketing and construction plans and are conducting accessibility studies.
- We successfully moved our bookkeeping systems to a new software program that will help us to better monitor our finances and track our income and expenses.
- I have met with each Chamber Committee at least once to familiarize myself with our programs, projects and volunteers.
- I have attended numerous ribbon cuttings, mixers and open houses.
- We have completed and distributed the 2007-2008 Chamber Membership Directory and Community Profile.
- Arrangements were made for more than 1,000 hours of free manpower to clean out the building we purchased.
- I attended one Leadership Seguin class tour and participated in our Seguin Youth Leadership graduation.

Best of all, I had a wonderful staff and so many volunteers who helped me accomplish it all. The credit really goes to those who have worked so hard to ensure my success.

Please feel free to send me your comments by e-mail at president@seguinchamber.com or give me a call at 379-6382. I welcome your feedback!

## Chamber seeking sponsor for 2008 Member-to-Member Keytag Project

People do business with people they know. And one way they get to know them is through the Chamber's Member-to-Member Savings Program.

Each month, hundreds of Chamber businesses participate in the program by offering discounts to customers who have the Member-to-Member keytags.

Currently, the Chamber is seeking a new sponsor for the 2008 Keytag Project.



Thousands of the tags are printed with the sponsor's name and they are distributed to all Chamber members and their employees.

A monthly flyer includes sponsor recognition (logo) and it is inserted in the *BusinessLine*. If your business is interested in sponsoring this unique project, give the Chamber at call at 379-6382 or email kendy@seguinchamber.com.

### MEMBER MENTION

**Leadership Seguin** spent their tour day in January learning about learning. Special Thanks to Mike Heckmann of **All Occasions Catering** for the van, and Shawn Martinez of **First Commercial Bank** for making the arrangements. Thanks to the folks at **Seguin ISD, Navarro ISD, Central Texas Technology Center, and KWED AM-1580/Seguin Daily News** for spending time with the group.

**Mission Pediatrics** will host a ribbon cutting on Feb. 1 at their new location at 1005 E. Court St., Ste 300, next to Parker City Pharmacy. The ribbon cutting is at 10 a.m. Mission Pediatrics' new phone number is 303-3400 or visit them at [www.missionpediatrics.net](http://www.missionpediatrics.net).

**Karen McMillan Realtors** has relocated! Their new address is 808 E. Court St. and the phone number remains 303-SOLD.

**Wilson Pottery Museum Project**

Join us on our first fundraiser benefiting the Wilson Pottery Museum.

**Saturday • February 9th • 7 p.m.**  
**@ Austin Street Live**  
**109 N. Austin St.**

There will be:  
**Door prizes, Silent Auction Items, DJ music, Karaoke, Fajitas, and Sausage Wraps**

Donations also accepted at the door.

**GAZETTE ENTERPRISE**

For more information contact:  
 The Tribune  
 830.379.6441 ext. 304

## CHAMBER CALENDAR ~ FEBRUARY

- Friday, Feb. 1**  
 Ribbon Cutting, 10 a.m., Mission Pediatrics, 1005 E. Court St., Ste. 300
- Monday, Feb. 4**  
 Industrial Relations Plant Tour, 11 a.m., Continental
- Tuesday, Feb. 5**  
 Governmental Affairs, 7 a.m., La Quinta
- Wednesday, Feb. 6**  
 Help Seguin Shine meeting, 5:15 p.m., Chamber
- Thursday, Feb. 7**  
 After-Hours Mixer, 5 p.m., Century 21 United D&D Real Estate, 1498 E. Court St.
- Business Showcase Committee, noon, Chamber
- Friday, Feb. 8**  
 Leadership Seguin Baked good sale at Guadalupe Regional Medical Center
- Saturday, Feb. 9**  
 Leadership Seguin Austin Street Live fundraiser
- Monday, Feb. 11**  
 Ambassadors Meeting, noon, El Ranchito
- Tuesday, Feb. 12**  
 Executive Committee, 7 a.m., La Quinta  
 Economic Development Committee, 4 p.m., Chamber  
 Freedom Fiesta Committee, 5:15 p.m., Chamber
- Wednesday, Feb. 13**  
 General Membership Meeting, 11:30 a.m., Coliseum
- Monday, Feb. 18**  
 Board of Directors Meeting, noon, Dixie Grill
- Tuesday, Feb. 19**  
 Agri-Fest Committee, 5:30 p.m., Chamber
- Thursday, Feb. 21  
 Business Showcase Committee, noon, Chamber
- Monday, Feb. 25**  
 Beautification Committee, 5:15 p.m., Chamber
- Tuesday, Feb. 26**  
 CVB Committee, Chamber
- Wednesday, Feb. 27**  
 Education Partnership Committee, 5:30 p.m., Chamber

## MEMBERSHIP RENEWALS

The Chamber wishes to thank the following for reaffirming their belief in the Seguin Area Chamber of Commerce by renewing their investment.

- |   |  |
|---|--|
| Advanced Home Health Services (Lewallen Family Enterprises, Inc.) | Indeco Products                                  |
| Advanced Telecom & Video Solutions                                | J & J Spirit Shoppe, LLC                         |
| All 4 One Cleaning Solutions                                      | Joy's Country Cabin                              |
| American General Financial Services                               | Nancy S. Masterson                               |
| Anderson Marketing Group  | Mission Pediatrics - Michele Lopez-Glynn, MD, PA |
| Jim Blair - Century 21 United D & D Real Estate                   | Net Results                                      |
| Capital Farm Credit   | Northside Furniture                              |
| Catering by Design  | Palm Harbor Village                              |
| Central Texas Metal Roofing Supply Co.                            | Phones & More Inc.                               |
| Consumer Credit Counseling Service                                | Pocket Communications                            |
| Continental Automotive Systems                                    | Quizno's Subs                                    |
| Cross United Church of Christ                                     | San Anthony Jewelry                              |
| Elder, Gloria - Karen McMillan Realtors                           | Seguin Beauty School                             |
| Herbold Brothers Water Well Drilling                              | Sodexo @ Texas Lutheran Dining Services          |
| Holiday Inn Express   | The UPS Store                                    |
| I.E.S.I. Cen-Tex Waste  | Tractor City                                     |



- March 4 & 5**  
 Business Showcase
- March 13**  
 After Hours Mixer - American Bank of Texas
- March 14**  
 Leadership Seminar hosted by the Leadership Seguin Class of 07-08
- March 14**  
 Gospel Concert sponsored by Leadership Seguin
- March 21**  
 Chamber office closed for Good Friday
- April 3**  
 Ambassadors serving lunch - Moore House
- April 10**  
 Agri-Fest
- April 17**  
 After-Hours Mixer - Sears
- April 25-27**  
 Central Texas Golf Fest

## WELCOME NEW MEMBERS

- Extreme Exhaust & Auto Accessories**  
 Jerry Whitaker  
 256 W. Court St.  
 Seguin, TX 78155  
 210-347-6016 Fax: 210-667-9646  
 Automobile Repairs & Service  
 Truck Accessories
- Grafe Appraisal Services**  
 Bob Grafe  
 6635 FM 2438  
 Kingsbury, TX 78638  
 830-743-3399 Fax: 830-639-4198  
 Real Estate Appraisers
- The Fields at Huber Ranch**  
 Johnny Guerrero  
 3000 Huber Rd.  
 Seguin, TX 78155  
 830-556-6218 Fax: 830-639-4356  
[www.huberanchfastpitch.com](http://www.huberanchfastpitch.com)  
 Sports Complex



## Alamo Group's new corporate offices

Alamo Group officials, Seguin City Council members and Seguin Area Chamber of Commerce Ambassadors and members were on hand Jan. 22 for the ribbon cutting at the Alamo Group's new corporate offices at 1627 E. Walnut Street. The Chamber worked with the City of Seguin, and the Seguin Economic Development Corporation to help keep the Alamo Group corporate offices in Seguin. Pictured from Alamo Group are Ron Robinson, President and CEO, cutting the ribbon, along with Ian Burden, Executive Vice President, Alamo Group (USA) Inc., North American Industrial Division. Alamo Group designs, manufactures and distributes high-quality equipment for right-of-way maintenance and agriculture - including tractor-mounted mowing and other vegetation maintenance equipment, excavators, street sweepers & more. Office hours are 8 a.m. to 5 p.m. and the phone number is 379-1480.

## Leadership Seguin to help open the Wilson Pottery Museum

The Seguin Area Chamber of Commerce's annual Leadership Seguin Class has chosen the Wilson Pottery Museum as this year's community project. The Wilson Family Pottery Company was started in the 19th Century by siblings Hiram, James and Wallace Wilson off of Capote Road East of Seguin. The Wilson Family Pottery Company is considered by many historians to be the first African American owned business in Texas following Reconstruction.

Wilson Family pottery pieces can be found in many museums, art galleries and in private collections.

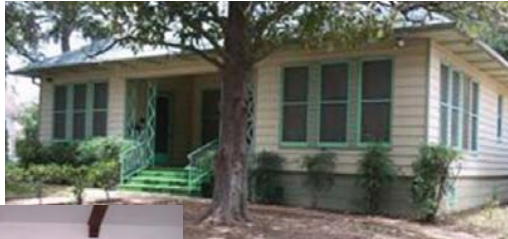
The museum will be located in the Matthies house at 320 W. Nolte St. in Seguin. The Matthies house is located behind the Guadalupe County Tax Assessor's office across Walnut Creek. The museum will be part of the Walnut Branch Project and a footbridge across the creek is planned.

The goal of the Leadership Seguin Class is to facilitate the opening of the museum by May of this year. The Wilson Pottery Foundation lacks the funds needed to complete the necessary renovations before the museum can open.

The museum needs ADA accessible; entrance ramp, parking and restroom. The museum will also need some interior and exterior paint, floor work, ceiling fans, interior track lighting and display cases for pottery. A security system and a fire suppression system

are also needed. Some landscaping and a sign for the yard are needed as well.

The Leadership Seguin Class has fundraisers planned to raise money and donations



of paint, lumber and volunteers for cleaning, painting and landscaping. **Baked goods and other treats will be sold on Friday, Feb. 8, from 10 a.m. until 2 p.m. in the lobby of Guadalupe Regional Medical Center. On Saturday, Feb. 9, there will be a fundraiser at Austin Street Live with music, food, several items for door prizes and a silent auction. An all-day Leadership Seminar will be held at the Seguin Guadalupe County Coliseum**

**on Friday, March 14. Local businesses and business minded people are invited to attend the seminar and hear presenters speak about various leadership related topics. Lunch will be provided at the seminar.**

**A Gospel concert will be performed at the Palace Theatre on Saturday, March 15, at 4 p.m. Engraved bricks are being sold to place along the sidewalk at the museum and permanently recognize supporters.**

The Leadership Seguin Class invites you to join them at these fundraisers to show your support for an important part of local history. If you would like to find out how you can help the Wilson Pottery Museum or for more information contact the Seguin Area Chamber of Commerce at (830) 379-6382.

# Convention & Visitors Bureau



## Going Nuts!

Winner of the 50 pound pecans at the McAllen International Travel Show David Crye, Sr. (Donna, Texas) accompanied by Fanny Harkins (Mickey Ferrell Realtors), Cesly Burrell (City of Seguin) and Sherry Nefford (CVB Director). Mr. Crye was selected from more than 1,400 entries at the Seguin Convention & Visitors Bureau booth at the show. Show management has reported attendance figures of 13,000 for the two days.



Tickets are available at Gift and Gourmet and at the door.

## VALENTINE NIGHT SPECIAL

Seguin Art Center is holding a "Golden Reception" Feb. 14 - upstairs in the Palace prior to show!

Champagne, strawberries and heavy hors d'oeuvres. You won't want to miss this Golden Social Event!

Tickets for the Golden Reception are \$20. "Golden Reception" is complimentary to Seguin Art Center members of "Red Carpet" status or above.



During the show, the CVB promoted Seguin for winter visitors to stay, shop and dine in Seguin. Six Seguin lodging and dining gift certificate packets were donated to show organizers for door prize drawings at the show. A special thank you to Dan Henry at **La Quinta Inn and Suites** for six, two-night lodging certificates, Danny De La Garza of **El Ranchito Restaurant** and Steve Johnson and Brian Dahl of **Kirby's Korner** for dining packages.

Austin, Dallas/Ft. Worth and Houston Chapters of AAA Texas recently held their annual Travel and Cruise shows for members. The CVB promoted Seguin in each of these cities. The shows experienced a good turn-out and many interested were in Seguin. By far, Houston was the most well attended show.

**Houston Travel & Leisure Show** - A delegation of volunteers and staff will head back to Houston the weekend of February 15-17 for the Houston Travel & Leisure Show. The show will be held at the Reliant Center. CVB Staff and volunteers will distribute travel literature to leisure travelers. This show is held in conjunction with the Home and Garden Show each year.

## Seguin Art Center presents *On Golden Pond*

Show dates are Feb. 14-16, 22-23 & Feb. 29 & March 1st at the Palace Theatre in Seguin. Show time each night is 7:30 PM. Adult admission is \$10; student admission is \$5.



## Teatro De Artes De Juan Seguin presents the 23rd Annual Noche De Gala Competencia de Vocalistas

Saturday Feb. 16, 7 PM TLU-Jackson Auditorium Tickets to the event are \$7 and can be purchased at the following locations:

Seguin Area Chamber of Commerce, Hispanic Chamber of Commerce, Davila's BBQ, and JP's Qwik Stop & Bakery

**History of the Noche De Gala** - What does "Noche De Gala" mean??? Noche De Gala literally translates into "GALA EVENING." On Jan. 11, 1986, Teatro De Artes De Juan Seguin began the "Noche De Gala" tradition and it has been so popular that the community has kept it alive. This year, we will be celebrating the 23rd Noche De Gala on Saturday, Feb. 16, at Texas Lutheran University Jackson Auditorium at 7 p.m.

The purpose of the first Noche De Gala event was to offer the community a cultural as well as a social evening of mariachi music and folklorico dancing. This event is consistent with Teatro's major goals i.e. 1) to promote a better understanding of the Mexican American people and their culture; and 2) to

See CVB, Page 7

## Taking Care of Business

## Shop Chamber Members First!