

# Applying your **BRAIN MODE**<sup>TM</sup>*power*

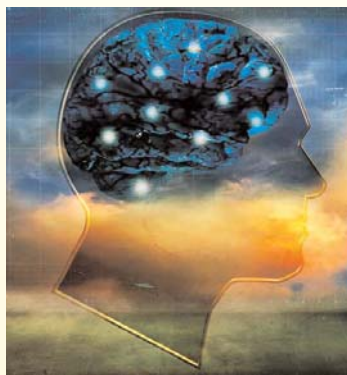
*...Linking learning to earnings*

## *for Career Transition*

**A complete do-it-yourself, hands-on package to ...**

*Align natural preferences for learning,  
communicating and working,  
with satisfying jobs and careers.*

- **Fast**
- **Easy to Understand**
- **Easy to Use**
- **Positive, Long-Term Results**
- **Individual and Organizational Applications**
- **Cost Effective**



**Match styles  
to jobs and careers**

**Leverage Brain Modes  
for success**

**Successful Communications**

### **Applications**

- Self awareness and knowledge
- Professional development
- Career succession planning
- Matching compatible Brain Modes to jobs and careers
- Career success counseling
- Enhance selection quality
- A tool for human resource professionals, coaches and counselors

### **Benefits**

- Knowledge of natural learning, thinking and communication preferences
- Increased adaptability and agility
- Select jobs and careers that match natural and strongest preferences
- Success based on natural competencies
- Build better relationships through communication
- Accelerate ability to learn with speed and ease

Copyright © 1994, 1997, 2003, 2004 The HADRON Group, Inc. All rights reserved.

## **Who should apply BRAIN MODE**<sup>TM</sup>*power***for Career Transition?**

Employee job satisfaction and talent retention are two of the most critical issues facing organizations today. These critical issues will intensify as the demand for skilled employees outstrips supply.

Employees who are transitioning jobs or those wanting to advance professionally can benefit from the self awareness achieved by applying the BRAIN MODE *power* career transition package.

This powerful tool helps people discover how their strongest brain mode preferences align with 21 major occupational categories and over 220 job titles.

In addition, human resource professionals, coaches, and career counselors can utilize the outcomes to mentor people choosing new or more compatible positions, enhance selection quality and develop and retain talent resulting in greater performance, job satisfaction and bottom-line organizational savings.

## **Each BRAIN MODE**<sup>TM</sup>*power***Career Transition package contains:**

### **Surveys and Profile:**

- BRAIN MODE *power* Self-Scoring Survey
- BRAIN MODE *power* Personal Profile
- Job Compatibility Survey

### **Application Tools:**

- Occupational Profile Guidelines
- Guidelines For Creating Working and Learning Environments
- Strategies for Personal Communication Effectiveness
- Strategies for Accelerated Learning
- Strategies for Strengthening Brain Modes
- Answering Questions about Career Transition

*Catalyst*  
The Spark That Creates Extraordinary Results!

**William D. Smith**

710 W. Castlewood, Friendswood, TX 77546  
www.speakingforsuccess.net

**E-mail:** William\_Smith@speakingforsuccess.net

**Phone:** (281) 704-0180 **Fax:** (281) 996-0591

Copyright © 1994, 1997, 2003, 2004 The HADRON Group, Inc. All rights reserved.

www.brainmodepower.com