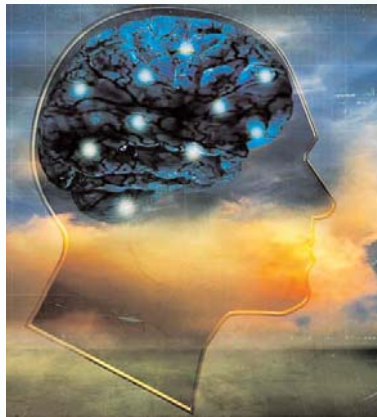


# Synchronizing your **BRAIN MODE**<sup>TM</sup>*power*

...Linking learning to earnings

## for Team Development

**A complete do-it-yourself, hands-on package to ...  
Organize and leverage a work group's natural power  
to learn, perform and work more effectively.**



### Applications

- Awareness of each co-worker's learning, thinking and communication modes
- Team building
- Create high performance teams
- Enhancing the abilities of work groups
- Team communications
- Team learning and competency development
- A tool for coaches, counselors and human resource professionals

- **Fast**
- **Easy to Understand**
- **Easy to Use**
- **Positive, Long-Term Results**
- **Individual and Organizational Applications**
- **Cost Effective**

**Tap into each team member's  
greatest assets**

**Create high-performance  
teams**

**Successful Communications**

### Benefits

- Leverage team diversity for team success
- Form diversely balanced teams for high productivity
- Match individual team members to tasks and projects
- Increased effectiveness of team coaches and mentors
- Effective planning of team meetings and special events
- Build team competencies and skills
- Maximize team learning and creativity

Copyright © 1994, 1997, 2003, 2004 The HADRON Group, Inc. All rights reserved.

**BRAIN MODE**<sup>TM</sup>*power* Team Development packages require  
purchase of one Administrator's manual and software per team containing:

Administrator's Manual, instructions, guidelines and CD with templates for creating a Team Learning and Thinking Profile.

## Who should synchronize **BRAIN MODE**<sup>TM</sup>*power* for Team Development?

The old saying, "Two heads are better than one," certainly applies to work groups and teams. Groups that utilize each person's potential are the most successful because they are using the strongest assets from a pool of knowledge, experience and talents.

BRAIN MODE *power* taps into the preferences and abilities of every individual on the team, enhancing the overall group's abilities to work together and produce outstanding results through increased productivity.

Human resource managers and group managers can use preference and ability knowledge to pair up more diverse individuals to achieve higher overall team competencies and skills.

## Each **BRAIN MODE**<sup>TM</sup>*power* Team Development package contains:

### Surveys and Profiles:

- BRAIN MODE *power* Self-Scoring Survey
- BRAIN MODE *power* Team Survey
- BRAIN MODE *power* Personal Profile
- BRAIN MODE *power* Team Profile

### Application Tools:

- Tools and guidelines to interpret, apply and leverage team and individual assets
- Guidelines For Creating Working and Learning Environments
- Strategies for Personal Communication Effectiveness
- Strategies for Accelerated Learning
- Strategies for Strengthening Brain Modes
- Answering Questions about Team Development



**William D. Smith**

710 W. Castlewood, Friendswood, TX 77546  
www.speakingforsuccess.net

**E-mail:** William\_Smith@speakingforsuccess.net  
**Phone:** (281) 704-0180 **Fax:** (281) 996-0591

Copyright © 1994, 1997, 2003, 2004 The HADRON Group, Inc. All rights reserved.

www.brainmodepower.com