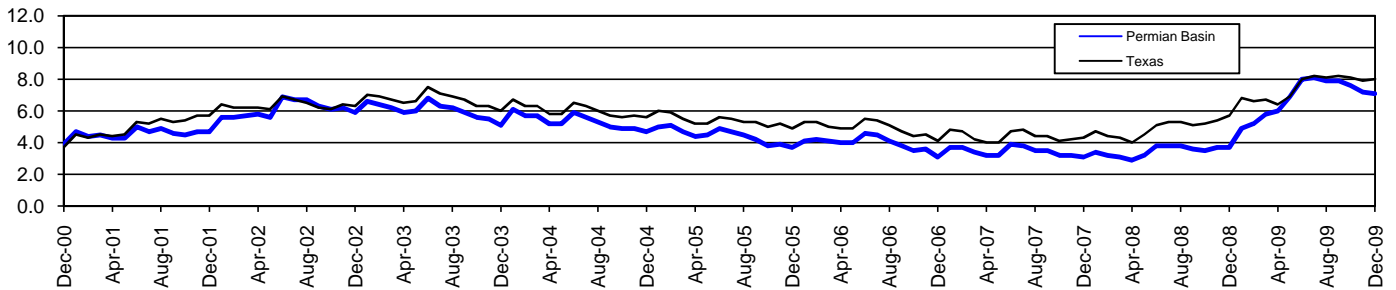


Permian Basin Workforce Development Area*

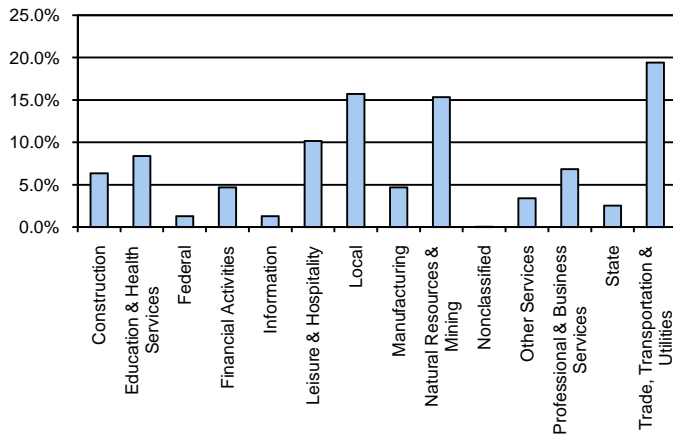
December 2009

Permian Basin WDA					Texas				
	CLF	Employed	Unemployed	Rate		CLF	Employed	Unemployed	Rate
Dec-09	215,977	200,723	15,254	7.1	Dec-09	12,078,674	11,115,658	963,016	8.0
Nov-09	216,997	201,444	15,553	7.2	Nov-09	12,101,184	11,148,871	952,313	7.9
Dec-08	208,769	201,067	7,702	3.7	Dec-08	11,788,631	11,120,773	667,858	5.7

Historical Unemployment Rates



Permian Basin WDA Industry Composition 2nd Quarter 2009



Total WDA Claims

	Dec-09	Nov-09	Dec-08	OTY
Initial	1,237	1,212	1,261	-24
Continued	7,778	8,577	3,339	4,439
Continued Claims for the Week of the 12th				
Continued	2,564	2,891	1,012	1,552

Texas Unemployment Insurance Claims Filed

	Dec-09	Nov-09	Dec-08	OTY
Initial	100,826	98,560	111,531	-10,705
Continued	1,147,179	1,219,676	818,143	329,036
Continued Claims for the Week of the 12th				
Continued	266,245	259,781	109,365	156,880

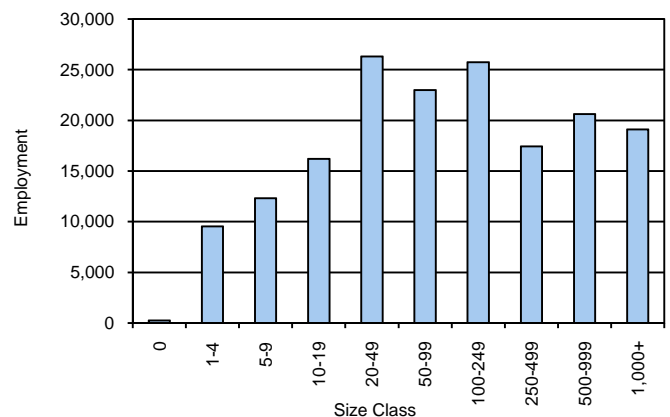
Permian Basin WDA Average Weekly Wage

	Permian Basin	WDA Qtr. Chg.	Texas
2nd Quarter 2009	\$787.07	-\$44.87	\$838.34
1st Quarter 2009	\$831.94	WDA OTY Chg.	\$885.88
2nd Quarter 2008	\$833.43	-\$46.36	\$848.95

NAICS Covered Employment Quarterly Data 2nd Quarter 2009

SUPER SECTOR	Employment	Change	
		Quarter	Year
Construction	10,834	-786	-1,323
Education & Health Services	14,260	195	-25
Federal	2,166	129	182
Financial Activities	7,991	-195	-6
Information	2,157	-29	-136
Leisure & Hospitality	17,302	593	702
Local	26,794	242	1,283
Manufacturing	7,963	-669	-1,322
Natural Resources & Mining	26,107	-2,366	-2,648
Nonclassified	90	44	-29
Other Services	5,764	-187	-319
Professional & Business Services	11,631	-1,282	-2,764
State	4,332	92	76
Trade, Transportation & Utilities	33,084	-1,264	-1,259
TOTAL	170,475	-5,483	-7,588

Size Class Employment Composition 2nd Quarter 2009



*Counties in WDA: Andrews, Borden, Crane, Dawson, Ector, Gaines, Glasscock, Howard, Loving, Martin, Midland, Pecos, Reeves, Terrell, Upton, Ward, & Winkler