

Labor Force Estimates

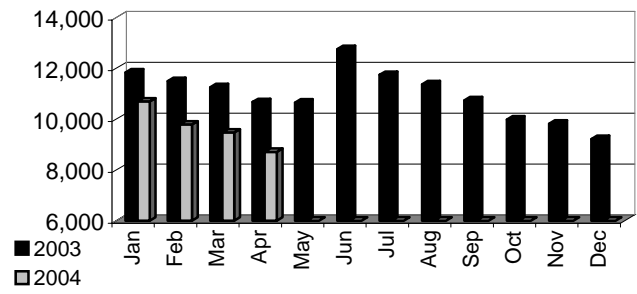
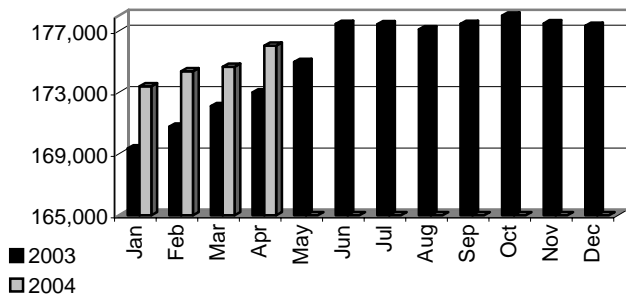
Civilian Labor Force Estimates (non-seasonally adjusted)

	Permian Basin WDA				Texas			
	CLF	Empl	Unempl	Rate	CLF	Empl	Unempl	Rate
Apr-04	184,747	176,039	8,708	4.7	10,901,319	10,290,350	610,969	5.6
Mar-04	184,142	174,671	9,471	5.1	10,874,603	10,219,741	654,862	6.0
Apr-03	183,660	172,995	10,665	5.8	10,823,311	10,126,348	696,963	6.4

Permian Basin WDA

The unemployment rate in the Permian Basin WDA dropped by four-tenths of a percentage point in April 2004 to 4.7 percent. This is the lowest April rate seen in the WDA in four years. The rate stood at 5.8 percent a year ago. Employment in the WDA rose by 1,368 workers in April to 176,039. The number of unemployed in the WDA dropped by 8.1 percent to 8,708 people. The number of unemployed has dropped by almost 2,000 people in the past four months. The number of people receiving unemployment insurance dropped by 198 in April and by 630 since April of last year. The unemployment rate in the WDA should drop next month, as historical trends show the rate normally drops from April to May.

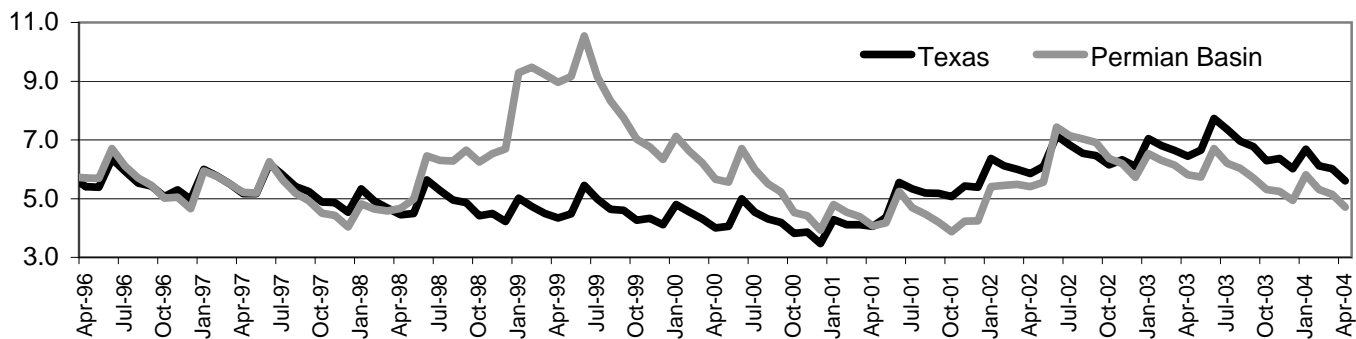
Permian Basin WDA



Employment

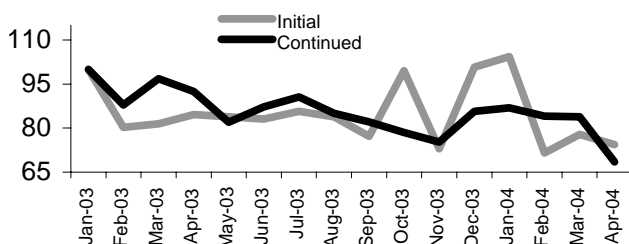
Unemployment

Historical Unemployment Rates



Unemployment Claims Data

Indexed Growth Rates for Claims
(Base Period = January 2003)



Total Claims

	Apr-04	Mar-04	Apr-03	OTY Change
Initial	1,148	1,202	1,305	-157
Continued	8,249	10,100	11,139	-2,890

Continued Claims for the Week of the 12th

	Apr-04	Mar-04	Apr-03	OTY Change
Continued	1,586	1,784	2,216	-630

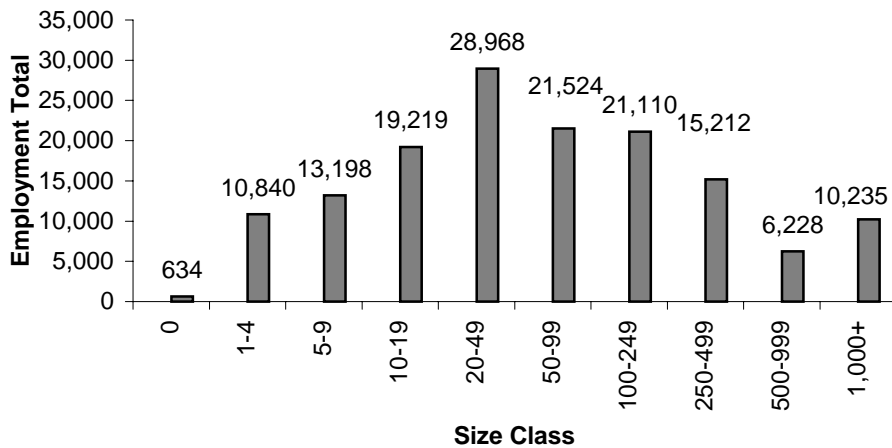
Occupational Information

Permian Basin WDA's Highest Employed Occupations

<u>Occupation</u>	<u>Wage</u>	<u>Occupation</u>	<u>Wage</u>
Office and Admin. Support Occupations	\$11.21	Trans. and Material Moving Occupations	\$11.18
Sales and Related Occupations	\$12.92	Production Occupations	\$12.92
Construction and Extraction Occupations	\$13.29	Management Occupations	\$32.63
Food Prep. and Serving-Related Occupations	\$7.21	Installation, Maintenance, Repair Occupations	\$14.14
Education, Training, and Library Occupations	\$16.87	Healthcare Practitioners/Technical Occupations	\$23.50

Industrial Employment

Permian Basin WDA Size Class Employment Composition
3rd Quarter 2003



Top 20 Employers in the WDA

- ANDREWS ISD
- BIG SPRING I S D
- CINGULAR WIRELESS EMPLOYEE SERVICES
- ECTOR COUNTY ISD
- HEB GROCERY COMPANY LP
- MIDLAND - CITY OF
- MIDLAND COLLEGE
- MIDLAND COUNTY
- MIDLAND ISD
- NURSES UNLIMITED INC
- ODESSA JUNIOR COLLEGE DISTRICT
- ODESSA-CITY OF
- PATTERSON UTI DRILLING WEST LP
- POSTAL DATA CENTER
- SCHLUMBERGER TECHNOLOGY CORP
- TEXAS ASSOCIATION OF COUNTIES
- TEXAS DEPARTMENT OF CRIMINAL JUSTICE
- TEXAS DEPARTMENT OF MENTAL HEALTH
- WAL-MART ASSOCIATES INC
- YALE E KEY INC

Permian Basin WDA Employment by Size Class
3rd Quarter 2003

Size Class	Employment in Size Class	Quarterly Employment	Quarterly UI Accounts
0	0	634	728
1	1-4	10,840	4,851
2	5-9	13,198	1,995
3	10-19	19,219	1,414
4	20-49	28,968	947
5	50-99	21,524	312
6	100-249	21,110	150
7	250-499	15,212	47
8	500-999	6,228	10
9	1,000+	10,235	5
Total		147,168	10,459

Average Weekly Wage	PB	Change	Texas	Change
3rd QTR 2003	\$568.49	-\$2.50	\$693.31	-\$3.76
2002 Average	\$570.99	\$1.10	\$697.07	\$3.95
2001 Average	\$569.89		\$693.12	