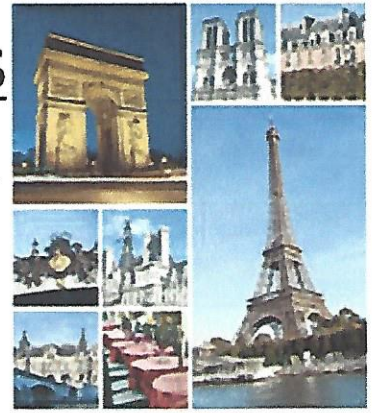


SWEETWINE TRAVEL SERVICES

Invites you to join us as we discover the beauty of...

PARIS, FRANCE

March 27, 2014 – April 4, 2014



Package Price – per person – **\$3000.00** (from San Francisco) **\$2900.00** (from New York)

Includes:

- Round trip airfare
- 7 nights first-class hotel accommodations
- Airport transfer service
- Daily breakfast
- Dinner at the “Eiffel Tower”
- Travel insurance
- Prices are based on double occupancy*

Additional Four (4) night excursion to...



LONDON, ENGLAND

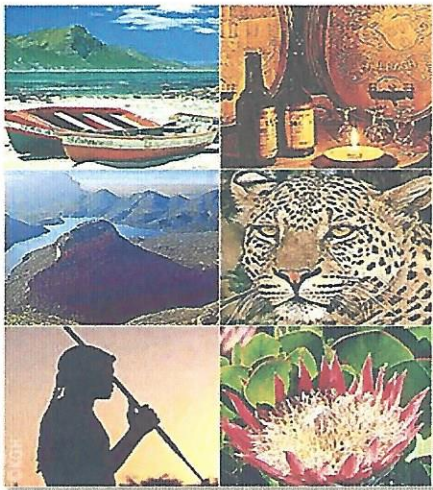
\$665.00* per person (double-occupancy*)

Includes:

- 4 nights first-class hotel accommodations
- Daily breakfast
- First-class rail service to London
- Ground transport service from hotel to airport

All rates for the Paris and London excursions are based on double-occupancy. A non-refundable deposit of \$200.00 (per person) is due by July 25, 2013. The advertised price quotes are based upon a minimum of ten (10) full-pay passengers that have successfully completed reservation pre-requisites. Airfare, air taxes, and fuel charges are subject to change until actual tickets have been issued. Please read the “Terms and Conditions” section on back page for more travel details and information.

NOTE: Airline ticket rates change frequently and prices are not “locked in” until there are legitimate bookings based on current advertised fares. Sweetwine Travel Services makes every possible attempt to book early, to secure the best rates for our clients. However, the agency has no control of rate changes imposed by airline companies, hotels, and other travel connected services.



Patricia Sweetwine Travel Services

proudly presents

SOUTH AFRICA

Cape Town * Johannesburg
Soweto * Pilanesburg

December 7-18, 2009

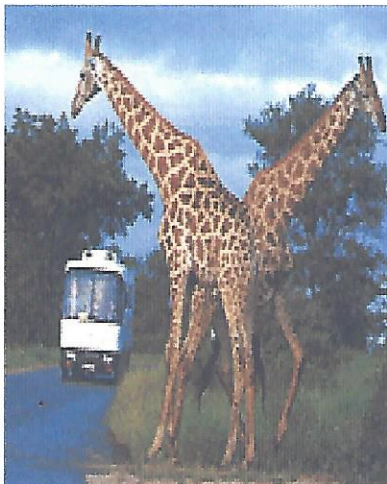
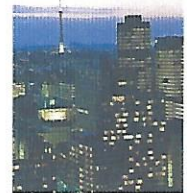


Tour Price: per person, based on double occupancy

Departing San Francisco	\$4,955.00 US Dollars
Departing Chicago	\$4,890.00 US Dollars
Departing Atlanta	\$4,755.00 US Dollars
Departing New York	\$4,830.00 US Dollars
Single Supplement Available	\$829.00 US Dollars (Additional Cost)

Tour Includes:

- ✚ Roundtrip air coach class to Cape Town, Cape Town to Johannesburg, and return from Johannesburg with current taxes
- ✚ 4-Nights in Cape Town at 4-Start Hotel
- ✚ 2-Nights in Pilanesburg – *African Safari*
- ✚ 4-Nights in Johannesburg
- ✚ 3-Full day tours in Cape Town
- ✚ Buffet Breakfast daily, two dinners and two lunches
- ✚ Full day tour of Soweto and a half day tour of Constitutional Hill
- ✚ Roundtrip transfers throughout the tour
- ✚ Hotel taxes, service charges & U.S. Departure Tax



Tour Price subject to:

The price is subject to change if a minimum of 10 people traveling together changes. The price above is the Cash Discount Price payable by check. If paying by credit card, please add 3% to the price. All prices herein are based on current rates of exchange which could fluctuate at the time of final payment and current taxes which are only final at time tickets are issued. Airline tax and fuel surcharge are subject to change without notice until such time as tickets are paid in full and issued. A payment plan is available upon request. The initial non-refundable Deposit of \$500.00 per person is due by March 15, 2009. The Final Payment is due by September 1, 2009. The payments for Tours, Travel and all Hotel costs are non-refundable after September 20, 2009. Porterage at airports/hotels, tips to drivers/guides/escorts, insurance of any nature is not included. Travel and tour insurance is not included, although strongly recommended. A valid Passport is required.

CALL: (510) 834-7690

Patricia Sweetwine Travel Service

710 East 22nd Street, Suite 101, Oakland, California 94606, Fax: (510) 832-3144
(CST #2035553-40)